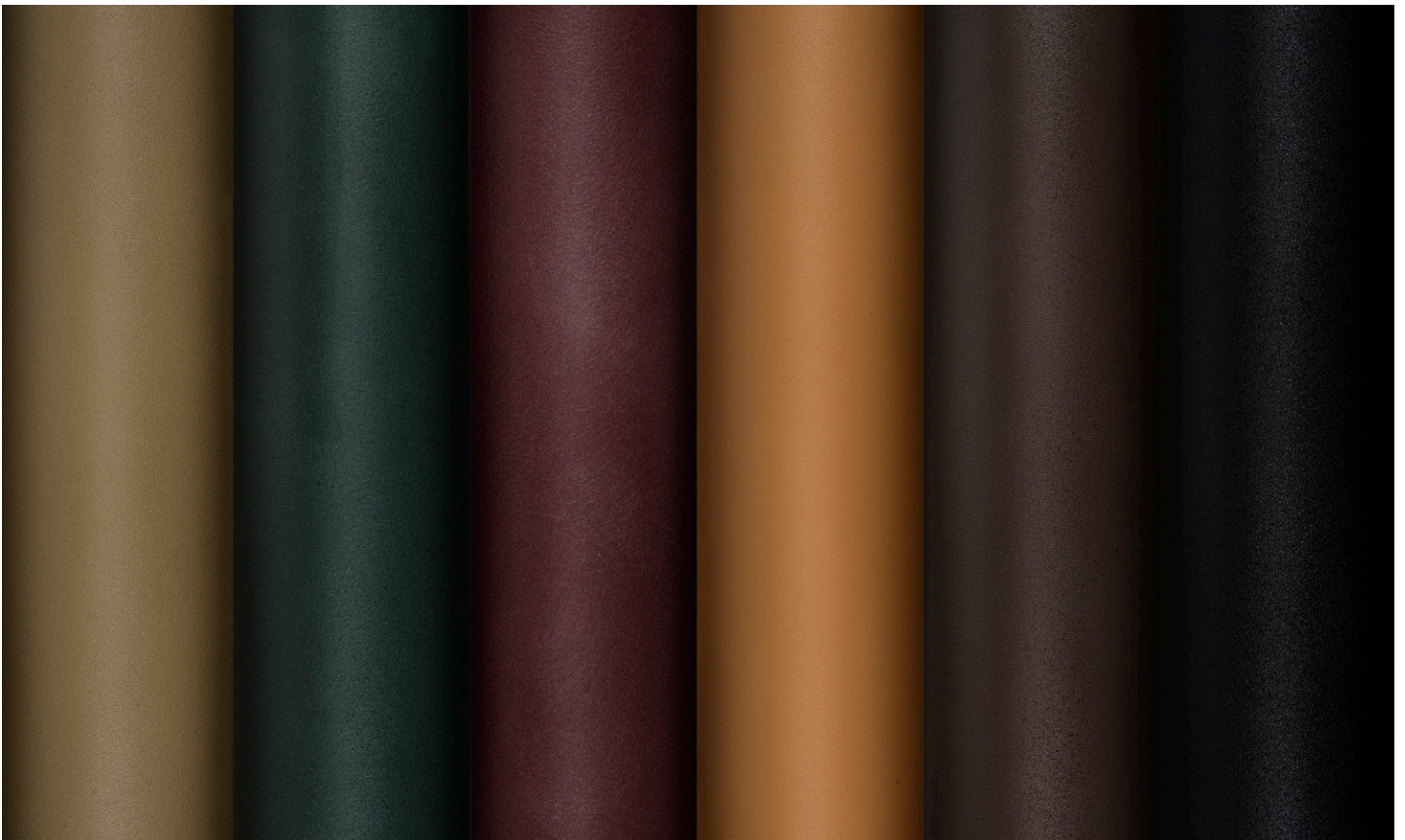


NAPOLI

product overview

Our timeless, trustworthy vegetable-tanned leather is crafted from the highest quality raw materials. With a smooth, rich look and tight grain, it's highly customizable, versatile, and durable for high-traffic areas. It's great on hard surfaces like table tops and wall panels.

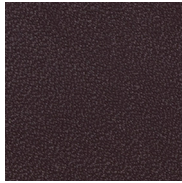


NAPOLI

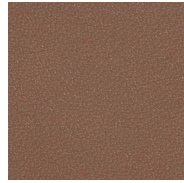
colorways



Whiskey
N02



Pitch Brown
N17



Olive Branch
N12



Black
N07

NAPOLI

specifications

Content	European full grain vegetable-tanned aniline-dyed cowhide
Finish	Durable protective finish, EDGE stain release
Size	Avg 50-55 sf
Average Usable Area	60" x 65"
Thickness	1.2-1.3 mm
Weight Per Square Foot	3.25 oz
Texture	Smooth
Colors Available	4 standard colors
Applications	Residential, Hospitality, Contract, Aviation, Marine, Retail
Use	Upholstery, vertical and direct applications
Wellness	Greenguard Gold certified
EDGE Stain Release	Standard on all colors
Performance	Recommended for high-traffic areas, light patina

testing

Durability & Strength	Abrasion ASTM D 7255: Complies
	Breaking Force ASTM 2208 (100lbs): Complies
	Crocking ASTM D 5053: Class 5
	Elongation ASTM D 2211 (20-50%): Complies
	Light Fastness 72hrs/ISO 105-B02: Class 4-5
	Tearing Strength ASTM D 4705 (15lbs): Complies
Flammability	Boston Fire Code (BFD 1X-1): Complies
	California Technical Bulletin 117-2013: Class 1
	Cigarette Ignition Resistance (NFPA 260): Class 1
	Ignitability of Upholstered Seating by Smoldering & Flaming Sources (BS5852): Complies with FR treatment
	IMO Resolution A.652(16): Complies
	Surface Building Characteristic of Building Materials (ASTM E 84): Class B

maintenance

If a spill or stain should occur, blot immediately with a clean, absorbent cloth or sponge. Do not rub with force or pressure. A drop of saddle soap on a damp cloth may remove dirt.



NAPOLI

hide depiction

Avg 50-55 sf
Average Usable Area 60" x 65"

