

# MONGOLIAN SHEARLING

## product overview

Have fun with the lush look and appeal of our natural long-haired shearling. This Spanish lambskin adds a playful warmth to accents and more.

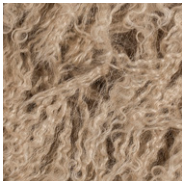


# MONGOLIAN SHEARLING

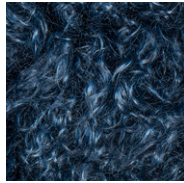
## colorways



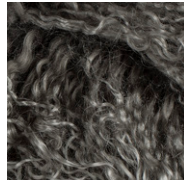
Natural  
MON01



Bark  
MON06



Blue Jeans  
MON03



Thunder  
MON04



Black  
MON02

# MONGOLIAN SHEARLING

## specifications

Content	Spanish-tanned and dyed lambskin
Finish	Hair-on
Size	Avg 8 sf / Band 610 mm x 1200 mm
Average Usable Area	610 mm x 1200 mm
Thickness	Long and "squiggly" hair
Texture	Wool
Colors Available	5 standard colors
Applications	Residential, Retail
Use	Upholstery and vertical applications
Wellness	Greenguard indoor air quality certified
EDGE Stain Release	Not available on shearling
Performance	Recommended for medium-traffic areas, fading will occur
Considerations	Shearling products that have been color-dyed are light-sensitive and their color will vary within dye lots. Natural fur products will vary from hide to hide.

## testing

Flammability	California Technical Bulletin 117: Class 1
--------------	--

## maintenance

If a spill or stain should occur, blot immediately with a clean, absorbent cloth or sponge. Do not rub with force or pressure. A drop of saddle soap on a damp cloth may remove dirt.

# MONGOLIAN SHEARLING

hide depiction

Avg 8 sf / Band 610 mm x 1200 mm

Average Usable Area 610 mm x 1200 mm

