

LUSTER LEATHER

product overview

Luster Leather, the pearl-finished sister to our Royal Hide, exudes a subtle, sophisticated sheen. Think Art Deco and Hollywood's elegant age of the Silver Screen. This is livable glamour at its finest.



LUSTER LEATHER

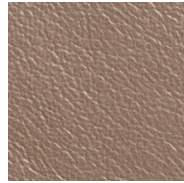
colorways



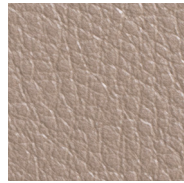
Mother of Pearl
LL0004



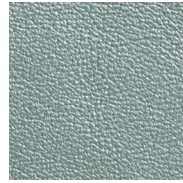
Primrose
LL0007



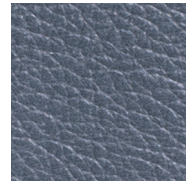
Pear Taupe
LL0005



Milkweed
LL0013



Pond
LL0006



Steel Blue
LL0010

LUSTER LEATHER

specifications

Content	European full grain aniline-dyed cowhide
Finish	Durable protective finish, EDGE stain release
Size	Avg 55-60 sf
Average Usable Area	60" x 65"
Thickness	1.0-1.2 mm
Weight Per Square Foot	3 oz
Texture	Smooth
Colors Available	6 standard colors
Custom	Custom coloring available
Applications	Residential, Hospitality, Contract, Aviation, Marine, Retail
Use	Upholstery and vertical applications
Wellness	Greenguard Gold certified
EDGE Stain Release	Standard on all colors
Performance	Recommended for high-traffic areas, light patina

testing

Durability & Strength	Abrasion ASTM D 7255: Complies
	Breaking Force ASTM 2208 (100lbs): Complies
	Crocking ASTM D 5053: Class 4-5
	Elongation ASTM D 2211 (20-50%): Complies
	Light Fastness 72hrs/ISO 105-B02: Class 4-5
	Tearing Strength ASTM D 4705 (15lbs): Complies
Flammability	Boston Fire Code (BFD 1X-1): Complies
	California Technical Bulletin 117-2013: Class 1
	Cigarette Ignition Resistance (NFPA 260): Class 1
	Surface Building Characteristic of Building Materials (ASTM E 84): Class B

maintenance

If a spill or stain should occur, blot immediately with a clean, absorbent cloth or sponge. Do not rub with force or pressure. A drop of saddle soap on a damp cloth may remove dirt.



LUSTER LEATHER

hide depiction

Avg 55-60 sf
Average Usable Area 60" x 65"

