

# KASHMIR SHEARLING

## product overview

Imagine the ultimate comfort, warmth, and rich beauty of Kashmir Shearling in your designs. Our Spanish lambskin has a luxurious hand with ironed wool that is unbelievably soft to the touch.



# KASHMIR SHEARLING

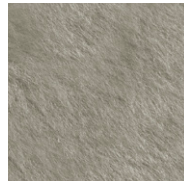
## colorways



Ivory  
KAS04



Driftwood  
KAS08



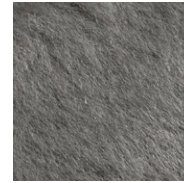
Adobe  
KAS09



Thatch  
KAS10



Truffle  
KAS05



Sterling  
KAS02



Black  
KAS01

# KASHMIR SHEARLING

## specifications

Content	Spanish-tanned and dyed lambskin
Finish	Hair-on
Size	Avg 5-6 sf
Average Usable Area	15" x 25"
Thickness	Wool is 14-15 mm in length
Texture	Wool
Colors Available	7 standard colors
Applications	Residential, Hospitality, Contract, Aviation, Marine, Retail
Use	Upholstery and vertical applications
EDGE Stain Release	Not available on shearling
Performance	Recommended for medium-traffic areas, fading will occur
Considerations	Shearling products that have been color-dyed are light-sensitive and their color will vary within dye lots. Natural fur products will vary from hide to hide.

## testing

Flammability	Boston Fire Code (BFD 1X-1): Complies
	California Technical Bulletin 117-2013: Class 1
	Cigarette Ignition Resistance (NFPA 260): Pass
	Surface Building Characteristic of Building Materials (ASTM E 84): Class B

## maintenance

If a spill or stain should occur, blot immediately with a clean, absorbent cloth or sponge. Do not rub with force or pressure. A drop of saddle soap on a damp cloth may remove dirt.

# KASHMIR SHEARLING

hide depiction

Avg 5-6 sf  
Average Usable Area 15" x 25"

