

KASHMIR SHEARLING

product overview

Imagine the ultimate comfort, warmth, and rich beauty of Kashmir Shearling in your designs. Our Spanish lambskin has a luxurious hand with ironed wool that is unbelievably soft to the touch.



KASHMIR SHEARLING

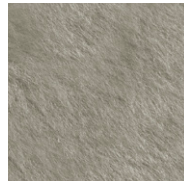
colorways



Ivory
KAS04



Driftwood
KAS08



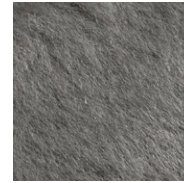
Adobe
KAS09



Thatch
KAS10



Truffle
KAS05



Sterling
KAS02



Black
KAS01

KASHMIR SHEARLING

specifications

Content	Spanish-tanned and dyed lambskin
Finish	Hair-on
Size	Avg 5-6 sf
Average Usable Area	380 mm x 650 mm
Thickness	Wool is 14-15 mm in length
Texture	Wool
Colors Available	7 standard colors
Applications	Residential, Hospitality, Contract, Aviation, Marine, Retail
Use	Upholstery and vertical applications
Wellness	Greenguard indoor air quality certified
EDGE Stain Release	Not available on shearling
Performance	Recommended for medium-traffic areas, fading will occur
Considerations	Shearling products that have been color-dyed are light-sensitive and their color will vary within dye lots. Natural fur products will vary from hide to hide.

testing

Flammability	Boston Fire Code (BFD 1X-1): Complies
	California Technical Bulletin 117: Class 1
	Cigarette Ignition Resistance (NFPA 260): Pass
	Surface Building Characteristic of Building Materials (ASTM E 84): Class B

maintenance

If a spill or stain should occur, blot immediately with a clean, absorbent cloth or sponge. Do not rub with force or pressure. A drop of saddle soap on a damp cloth may remove dirt.

KASHMIR SHEARLING

hide depiction

Avg 5-6 sf

Average Usable Area 380 mm x 650 mm

