

The background of the image is a close-up of a leather rug with a geometric pattern of triangles in shades of tan, beige, and light brown. The leather has a visible grain and some stitching is visible between the pieces.

®  
**EDELMAN**  
LEATHER

cavallini rug collection

# Our artisan-crafted, hair-on-hide Cavallini rugs provide a distinguished grounding to any room.

## endless optionality

The Collection features an array of geometric patterns and serene organic forms offered in a curated scope of six standard sizes including area rugs, runners and rounds with custom shapes and sizes available upon request. The palette is defined by a restrained set of neutral (natural) hues complemented by over forty accent colors, paving the way for endless optionality from tonal area rugs to bold statement runners. All rugs include a standard 1.5" border and a non-slip rubber backing.

The Cavallini Rug Collection is responsibly sourced from European farms and tanned in Italy. By way of upcycling raw materials from the food industry, we consciously extend a material's usefulness into one of purpose and enjoyment for decades to come.

## order with ease

To specify and order your rug, download the Order Form located on each pattern page at: <insert URL>. A rendering of your rug will be sent for review within 48 hours of your order form being received. Mock-up samples are also available upon request. Please reach out to your Edelman sales representative to specify custom sizes and design ideas.





Waterline Pattern



Design: David Dalton Inc./Photo: Matthew Millman



Origami Pattern



Photo: Romina Brandellero



Barcode Pattern





Squares Pattern



Alameda Pattern



Cigarette Stripe Pattern



Design: Parisa O'Connell/Photo: David Duncan Livingston



Suzani Pattern





Portal Pattern



Geo Pattern



Parallel Bricks Pattern



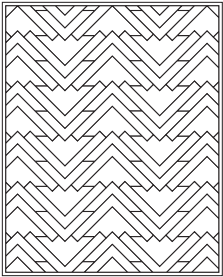
Basketweave Pattern



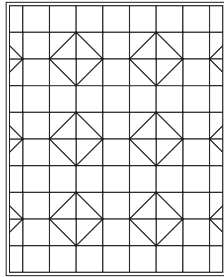
Diamonds Pattern



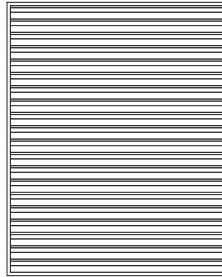
# Patterns



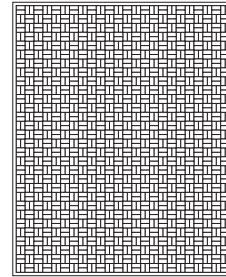
AKIMBO



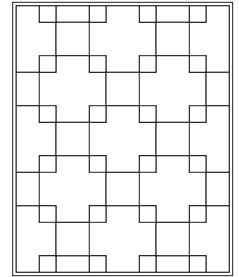
ALAMEDA



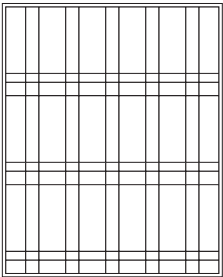
BARCODE



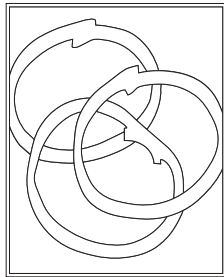
BASKETWEAVE



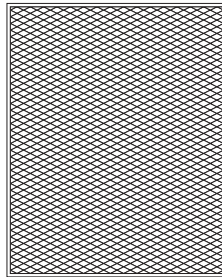
BLOCKED



CIGARETTE STRIPE



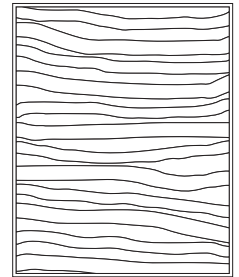
CIRCLES



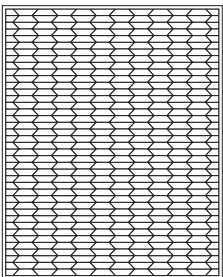
DIAMONDS



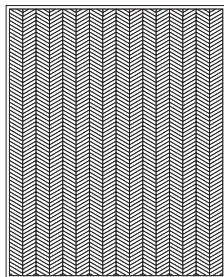
DIVIDED



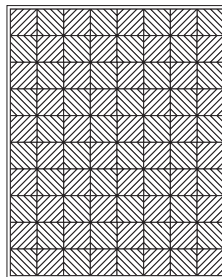
FAT LINES



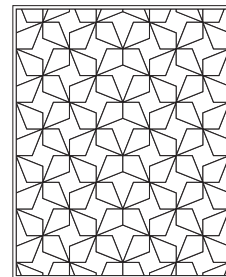
GEO



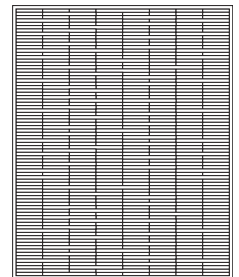
HERRINGBONE



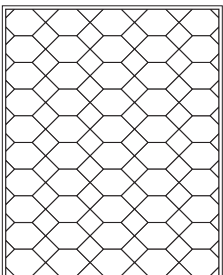
MAZE



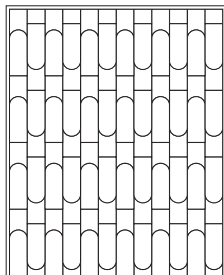
ORIGAMI



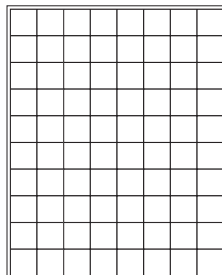
PARALLEL BRICKS



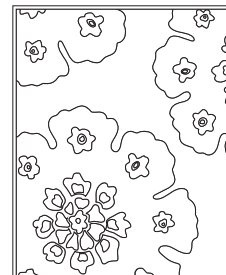
POMPEII



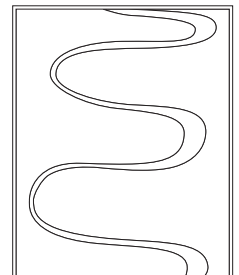
PORTAL



SQUARES



SUZANI



WATERLINE



## Core Colors



Natural Bianco  
C05



Natural Blonde  
C108



Natural Grey Light  
C85L



Natural Grey Dark  
C85D



Black  
C03



Tricolor  
C30

## Accent Colors

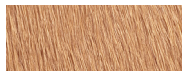
Aniline-dyed hides, sensitive to direct sunlight



Vanilla  
C27



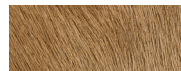
Peach  
C91



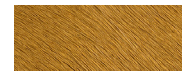
Cappuccino  
C20



Wet Sand  
C37



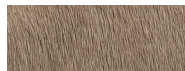
Suntan  
C56



Golden  
C55



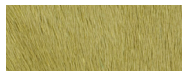
Hickory  
C104



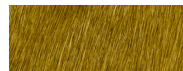
Bark  
C47



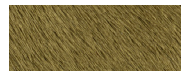
Banana  
C54



Kiwi  
C51



English Mustard  
C71



Celery  
C72



Limoncello  
C49



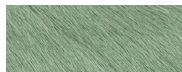
Fiesta Yellow  
C39



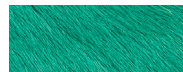
Chartreuse  
C31



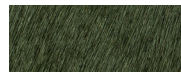
Apple Green  
C48



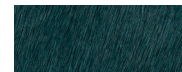
Sea Foam  
C107



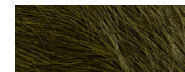
Barrier Reef  
C70



Forever Green  
C53



Coastal  
C46



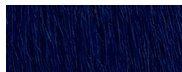
Olive  
C73



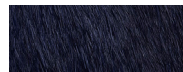
Baby Blue  
C40



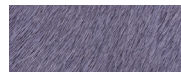
Fiesta Sea Blue  
C45



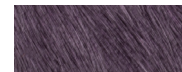
Electric Blue  
C58



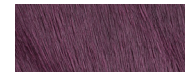
Navy Blue  
C41



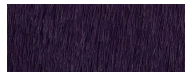
Lavender  
C34



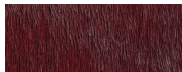
Violet  
C69



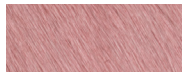
Sunset Pearl  
C68



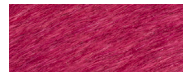
Fiesta Purple  
C44



Red Wine  
C29



Dusty Rose  
C60



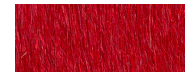
Pink Flower  
C64



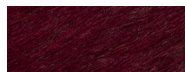
Fuchsia  
C62



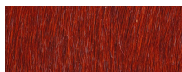
Fiesta Orange  
C43



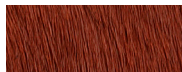
Crimson  
C24



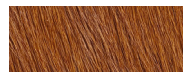
Garnet  
C67



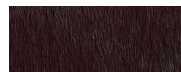
Burnt Orange  
C32



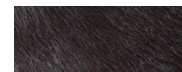
Terra Cotta  
C65



Rich Brown  
C17



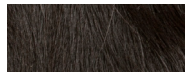
Burgundy  
C74



Eggplant  
C63



Nuts  
C105



Darkest Brown  
C04



Ash  
C106



**EDELMAN**  
LEATHER

80 Pickett District Rd, New Milford, CT 06776  
t: 860.350.9600 edelmanleather.com



June 2021